

MEN 220

ROOM CORRECTION SYSTEM

McIntosh
The Compendium



FRONT PANEL: Glass with LED/fiber-optic illuminated green nomenclature. ADJUST control. Digital information display. IR sensor. NAVIGATE control. ⚡ Touch buttons: GLOBAL MODE, FOCUS MODE (with indicator), BYPASS, MENU, VOICING, SELECT, STANDBY/ON (with indicator).



BACK PANEL: Power cord receptacle. POWER CONTROL: IN and OUT. DATA control input and IR sensor input. RS-232 connector. MICROPHONE receptacle. INPUTS: UNBALANCED Left and Right, BALANCED Right and Left. OUTPUTS (HIGH/LOW PASS CROSSOVER): HIGH Left and Right, LOW Left and Right (RCA), HIGH Right and Left, LOW Right and Left (XLR).

SPECIFICATIONS: **Frequency Response:** +0, -0.5dB from 20Hz to 20,000Hz. **Total Harmonic Distortion:** 0.002% from 20Hz to 20,000Hz. **Maximum Input Voltage:** 4.5V Unbalanced and Balanced (Pre-amp-Power Amp); 2.25V Unbalanced and Balanced (Processor Loop). **Maximum Output Voltage:** 4.5V Unbalanced and Balanced (Pre-amp-Power Amp), 2.25V Unbalanced and Balanced (Processor Loop). **Signal To Noise Ratio** (A-Weighted): 100 dB. **Input Impedance:** 10K ohms Unbalanced and Balanced. **Voltage Gain:** 0dB. **Output Impedance:** 50 Ohms. **Crossover Filter Types, Order and Slope:** Butterworth, 1st order, 6dB/octave, 2nd order, 12 dB/octave, 4th order, 24 dB/octave; Linkwitz-Riley, 2nd order, 12 dB/octave, 4th order, 24 dB/octave, 8th order, 48 dB/octave. **Power Requirements:** 120V ~ 50-60Hz at 35 watts; standby, less than 1 watt. Has **HR074** hand remote.

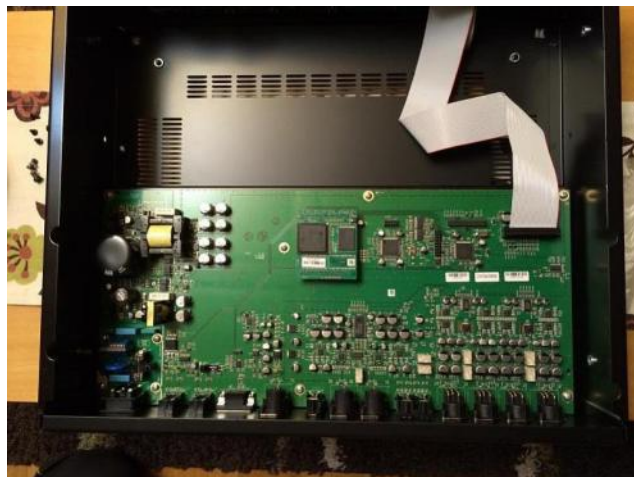
MEN 220

ROOM CORRECTION SYSTEM

McIntosh
The Compendium



ZN SERIAL NUMBER SERIES



ADM SERIAL NUMBER SERIES



ZN SERIAL NUMBER SERIES
MODIFIED OUTPUT DAUGHTER BOARD



MEN 220 - Sold from 2010 - Current. S/N: ZN1001~ZN???? & ADM1001 ~ADM????
(?,???? UNITS)

Size: 6"H, 17-1/2"W and 18"D behind panel. **Weight:** 25-1/2 lb. **\$4,500.00**